

Rotating cleaning nozzle MaxiSpinner 2 Series 5M4

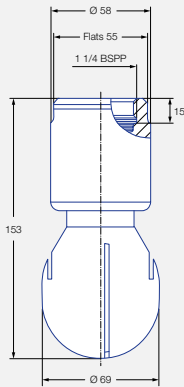


Features:

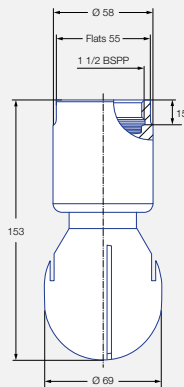
- Effective cleaning
- Reliable and long lasting
- Completely made of stainless steel
- Suitable for high temperatures



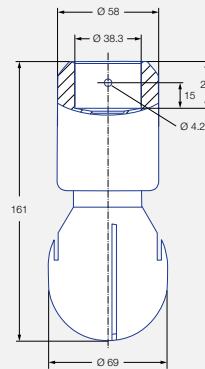
Series 5M4



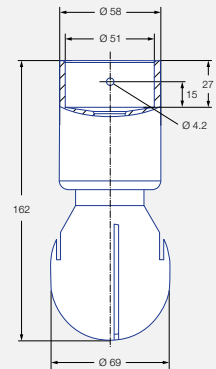
Female thread
1 1/4 BSPP



Female thread
1 1/2 BSPP



Dimensions slip-on connection
according to ASME-BE (OD-tube)



Dimensions slip-on connection
according to ASME-BE (OD-tube)

Max. tank diameter [m]	0	1	2	3	4	5	6	7	8	9
------------------------	---	---	---	---	---	---	---	---	---	---

Cleaning efficiency class
2

Max. temperature
250 °C

Installation
Operating in every direction possible

Bearing
Double ball bearing made of stainless steel 316L


Material
Stainless steel 316L

Recommended operating pressure
2 bar

Filtration
Line strainer with a mesh size of 0,1mm/170 mesh

Funktionsvideo
www.lechler.com/de-en/spinner
or scan the QR-Code.



Spray angle	Ordering no.					Narrowest free cross-section \varnothing [mm]	\dot{V} water [l/min]				Max. tank diameter [m]
	Type	Connection					p [bar] ($p_{max} = 7$ bar)*				
		1 1/4 BSP	1 1/2 BSP	1 1/2" Slip-on	2"- Slip-on		1,0	2,0	3,0	at 40 psi [US gal/min]	
360° 	5M4.279.1Y	AQ	AS	TF15	TF20	1.7	107	150	184	46	4.0
	5M4.329.1Y	AQ	AS	TF15	TF20	2.0	141	200	245	62	4.5
	5M4.369.1Y	AQ	AS	TF15	TF20	2.3	177	250	306	78	5.0

NPT thread and weld-on versions on request.

* Please note the maximum operating pressure of 4 bar for the 2" slip-on connection.

The max. tank diameter shown above applies for the recommended operating pressure and has to be seen as a recommendation. The cleaning result is also affected by the type of soiling

Operating with compressed air only for short-term usage. Operation above the recommended operating pressure has negative effects on the cleaning result and wear.

Information slip-on connection

- Bolt with head incl. pin made of stainless steel 316L included (Ordering no. 05M.431.1Y.00.00.0).
- Depending on diameter of the adapter, the flow rate increase due to leakage between connecting pipe and rotating cleaning nozzle.

Example Type + Connection = Ordering no.
of ordering: 5M4.369.1Y + AQ = 5M4.369.1Y.AQ